



MONTHLY MEMBERSHIP PROGRESS REPORT

District 202 F

Results as of: 08/31/2017

GMT: CLIFFORD HEYWOOD

LOCATION NEW ZEALAND

GMT CA

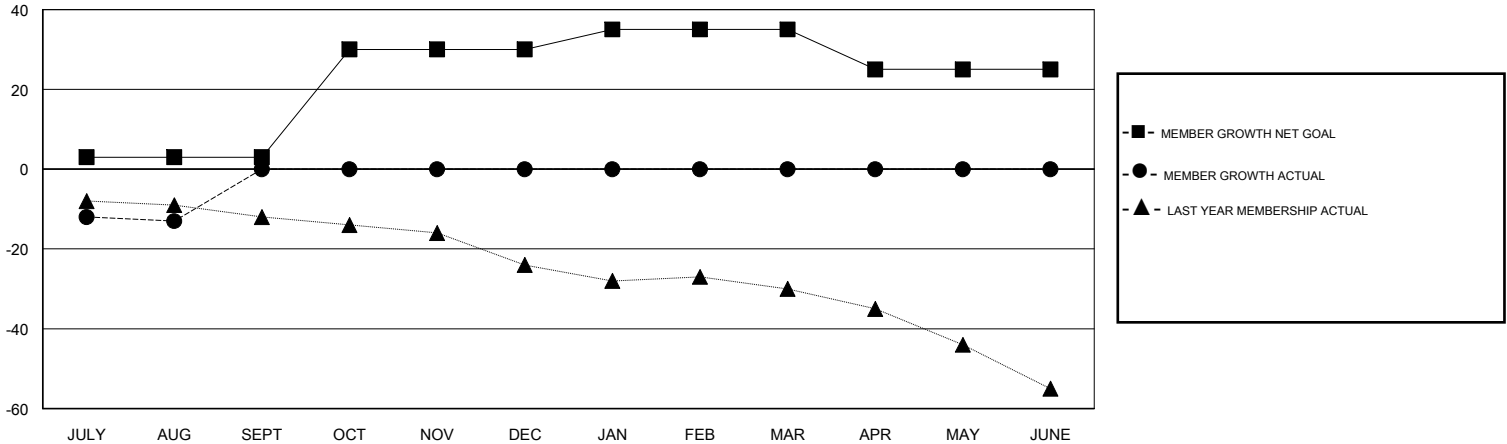
Clubs			
RESULTS FOR 2017-2018			
QUARTER	NEW CLUB GOAL	NEW CLUBS	DROPPED CLUBS
JULY/AUG/SEPT	0	0	0
OCT/NOV/DEC	1	0	0
JAN/FEB/MAR	0	0	0
APR/MAY/JUNE	0	0	0

Members			
RESULTS FOR 2017-2018			
QUARTER	MEMBER GROWTH NET GOAL	MEMBER GROWTH ACTUAL	DROPPED MEMBERS ACTUAL (including transfers)
JULY/AUG/SEPT	3	11	24
OCT/NOV/DEC	27	0	0
JAN/FEB/MAR	5	0	0
APR/MAY/JUNE	-10	0	0

GOALS AND ACTUAL NEW CLUBS CUMULATIVE



GOALS AND ACTUAL MEMBERS CUMULATIVE



DROPPED CLUBS: 0	9 CLUBS OF 48 ADDED 1 OR MORE NEW MEMBERS	GENDER DISTRIBUTION MALE 915 (65.40%) FEMALE 484 (34.60%) Women Percentage Fiscal Year Goal: 38%
DROPPED MEMBERS	CLICK HERE FOR CUMULATIVE MEMBERSHIP DATA	TOTAL FAMILY UNIT MEMBERS 61
DECEASED 5		FAMILY MEMBERS PAYING HALF DUES 31
CLUB CANCELLED 0		
OTHER 19		
TOTAL 24		